

2010 Jog-A-Thon

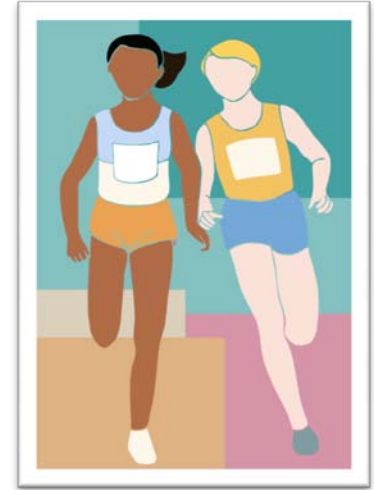


On Friday, June 4th during Gym period, each student will run/walk laps around the perimeter of the school.

Please make sure to wear appropriate clothes and shoes on this day! Help us raise money for your school's track and fitness stations by gathering donations using the attached donation form and envelope.

**WE WILL ONLY BE ACCEPTING FLAT DONATIONS,
NOT per lap pledges.**

The donations need to be turned in no later than Thursday, June 3rd. Prizes for total donation amounts will be calculated only on donations turned in by the deadline!



*****EVERY STUDENT WHO PARTICIPATES GETS A PRIZE*****

The top 50 students with the most in donations and the top 50 students who run the most laps will also receive a 18oz RED WATER BOTTLE IMPRINTED WITH THE SCHOOL'S LOGO

The top 20 students with the most in donations and the top 20 students who run the most laps will receive everything above plus a \$10 GIFT CARD TO BARNES & NOBLE BOOKSELLERS

The top 3 students with the most in donations and the top 3 students who run the most laps will receive everything above plus a \$20 GIFT CARD TO TOYS-R-US

The student with the most in donations and the student who runs the most laps will receive everything above plus a \$50 GIFT CARD TO TOYS-R-US

BONUS – If the school raises at least \$4,000 total:

The student with the most in donations and the student who runs the most laps will **ALSO** each receive **AN ADDITIONAL \$150 GIFT CARD TO TOYS-R-US!**

Also, the classes that gather the most in donations and that run the most total laps will each get an ice-cream party!

Winners will be announced and prizes distributed the week following the Jog-A-Thon